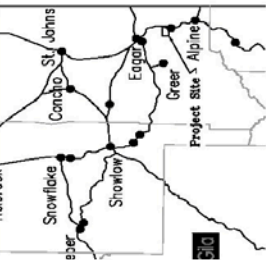


# RECORD OF SURVEY

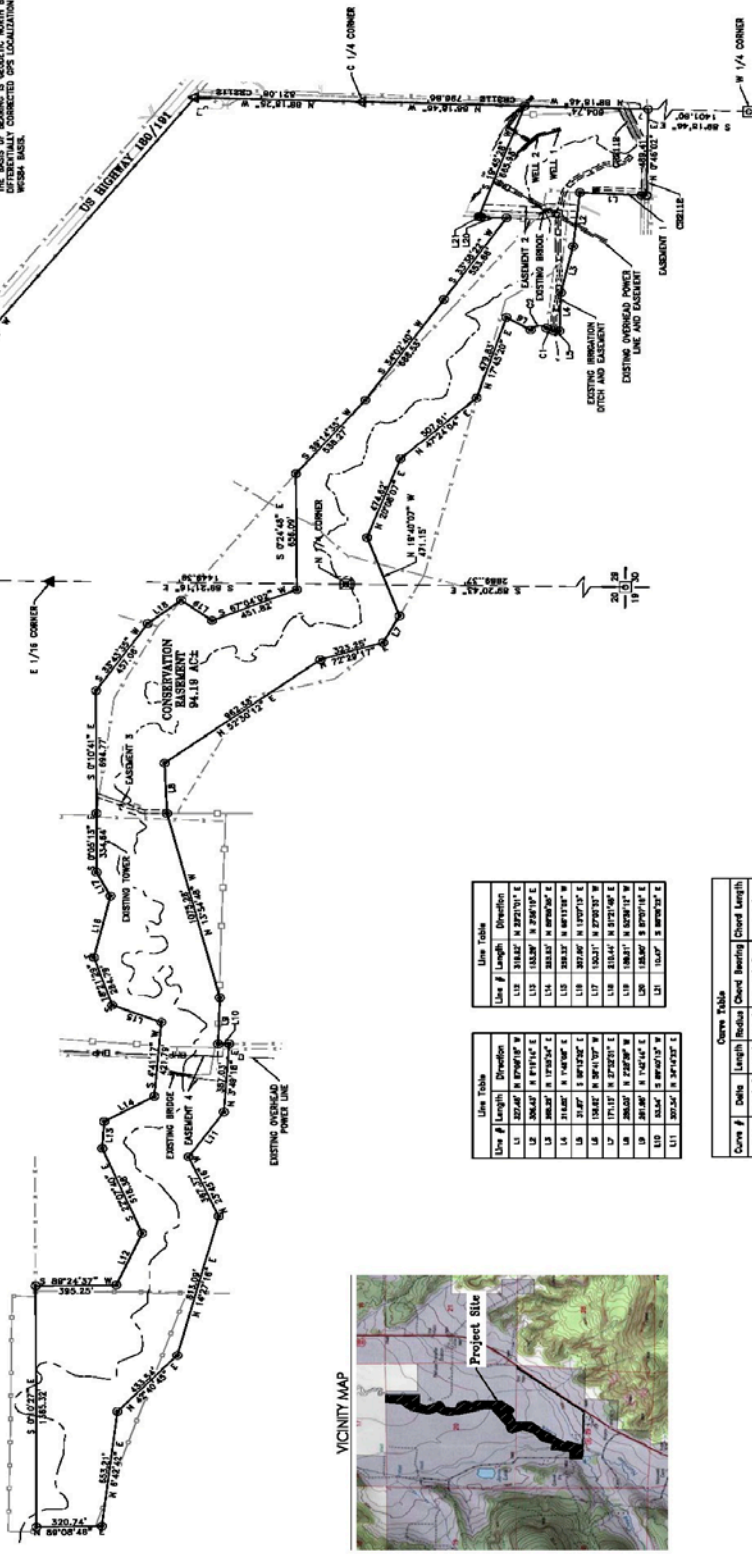
OF THE EC BAR RANCH CONSERVATION EASEMENT  
 A PORTION OF SECTIONS 20 & 29, TOWNSHIP 7 NORTH, RANGE 30 EAST,  
 G.63.E.R.M.L., NAVHORSO, APACHE COUNTY, ARIZONA

## AREA MAP

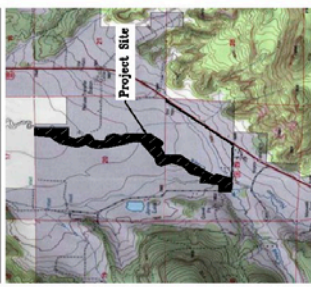


## LEGEND

- F4 5" ALUM CAP
  - F4 5/8 BRASS CAP
  - F4 REBAR W/ ALUM CAP
  - F4 REBAR W/ PLASTIC CAP
  - SET REBAR W/ YELLOW CAP
  - SET REBAR W/ YELLOW CAP
  - CALCULATED CORNER
  - NOTING: F4 OR SET EXCEPT AS NOTED
  - WIRE FENCE
  - ELK FENCE
  - STREAM CENTERLINE
- THE BASIS OF BEARING IS MAGNETIC NORTH BASED ON  
 DIFFERENTIALLY CORRECTED GPS LOCALIZATION WITH  
 WGS84 MODEL.



## VICINITY MAP



Line #	Length	Direction
L1	134.52'	S 89°21'14" E
L2	134.52'	S 89°21'14" E
L3	134.52'	S 89°21'14" E
L4	134.52'	S 89°21'14" E
L5	134.52'	S 89°21'14" E
L6	134.52'	S 89°21'14" E
L7	134.52'	S 89°21'14" E
L8	134.52'	S 89°21'14" E
L9	134.52'	S 89°21'14" E
L10	134.52'	S 89°21'14" E
L11	134.52'	S 89°21'14" E

Line #	Delta	Length	Direction
C1	0°00'00"	0.00'	N 0°00'00" E
C2	0°00'00"	0.00'	N 0°00'00" E
C3	0°00'00"	0.00'	N 0°00'00" E
C4	0°00'00"	0.00'	N 0°00'00" E
C5	0°00'00"	0.00'	N 0°00'00" E
C6	0°00'00"	0.00'	N 0°00'00" E
C7	0°00'00"	0.00'	N 0°00'00" E
C8	0°00'00"	0.00'	N 0°00'00" E
C9	0°00'00"	0.00'	N 0°00'00" E
C10	0°00'00"	0.00'	N 0°00'00" E
C11	0°00'00"	0.00'	N 0°00'00" E

Curve #	Delta	Length	Radius	Chord	Bearing	Chord Length
C1	0°00'00"	0.00'	0.00'	0.00'	N 0°00'00" E	0.00'
C2	0°00'00"	0.00'	0.00'	0.00'	N 0°00'00" E	0.00'
C3	0°00'00"	0.00'	0.00'	0.00'	N 0°00'00" E	0.00'
C4	0°00'00"	0.00'	0.00'	0.00'	N 0°00'00" E	0.00'
C5	0°00'00"	0.00'	0.00'	0.00'	N 0°00'00" E	0.00'
C6	0°00'00"	0.00'	0.00'	0.00'	N 0°00'00" E	0.00'
C7	0°00'00"	0.00'	0.00'	0.00'	N 0°00'00" E	0.00'
C8	0°00'00"	0.00'	0.00'	0.00'	N 0°00'00" E	0.00'
C9	0°00'00"	0.00'	0.00'	0.00'	N 0°00'00" E	0.00'
C10	0°00'00"	0.00'	0.00'	0.00'	N 0°00'00" E	0.00'
C11	0°00'00"	0.00'	0.00'	0.00'	N 0°00'00" E	0.00'

**CERTIFICATION**

This is to certify that the information herein is from actual field measurements under my direct supervision and is true and correct to the best of my knowledge and belief.

Kenneth K. Isaacson, R.L.S. 15928

**NOTES**

- EASEMENT LINES ARE AS DESCRIBED BELOW.
  - EASEMENT 1 - A 30' EASEMENT FOR INGRESS/EGRESS TO A SHOWN EASEMENT LINES ON THE EAST 50 FEET OF THE SHOWN EASEMENT.
  - EASEMENT 2 - A 70' EASEMENT FOR INGRESS/EGRESS AND MAINTENANCE OF WATER UTILITIES.
  - EASEMENT 3 - AN EASEMENT FOR THE INSTALLATION AND MAINTENANCE OF WATER UTILITIES.
  - EASEMENT 4 - AN EASEMENT FOR INGRESS/EGRESS AND MAINTENANCE OF WATER UTILITIES.
- NOT ALL EASEMENTS OF RECORD ARE SHOWN HEREON. UNLESS OTHERWISE INDICATED WITHOUT THE BENEFIT OF A CURRENT TITLE REPORT.

**ISAACSON ENGINEERING, INC.**  
 1100 N. GILBERT ST., SUITE 100  
 PHOENIX, ARIZONA 85006  
 PHONE (602) 277-7700  
 FAX (602) 277-7700  
 isaacson@isaacsoneng.com

REGISTERED PROFESSIONAL ENGINEER  
 STATE OF ARIZONA  
 CONSERVATION EASEMENT PROPERTY

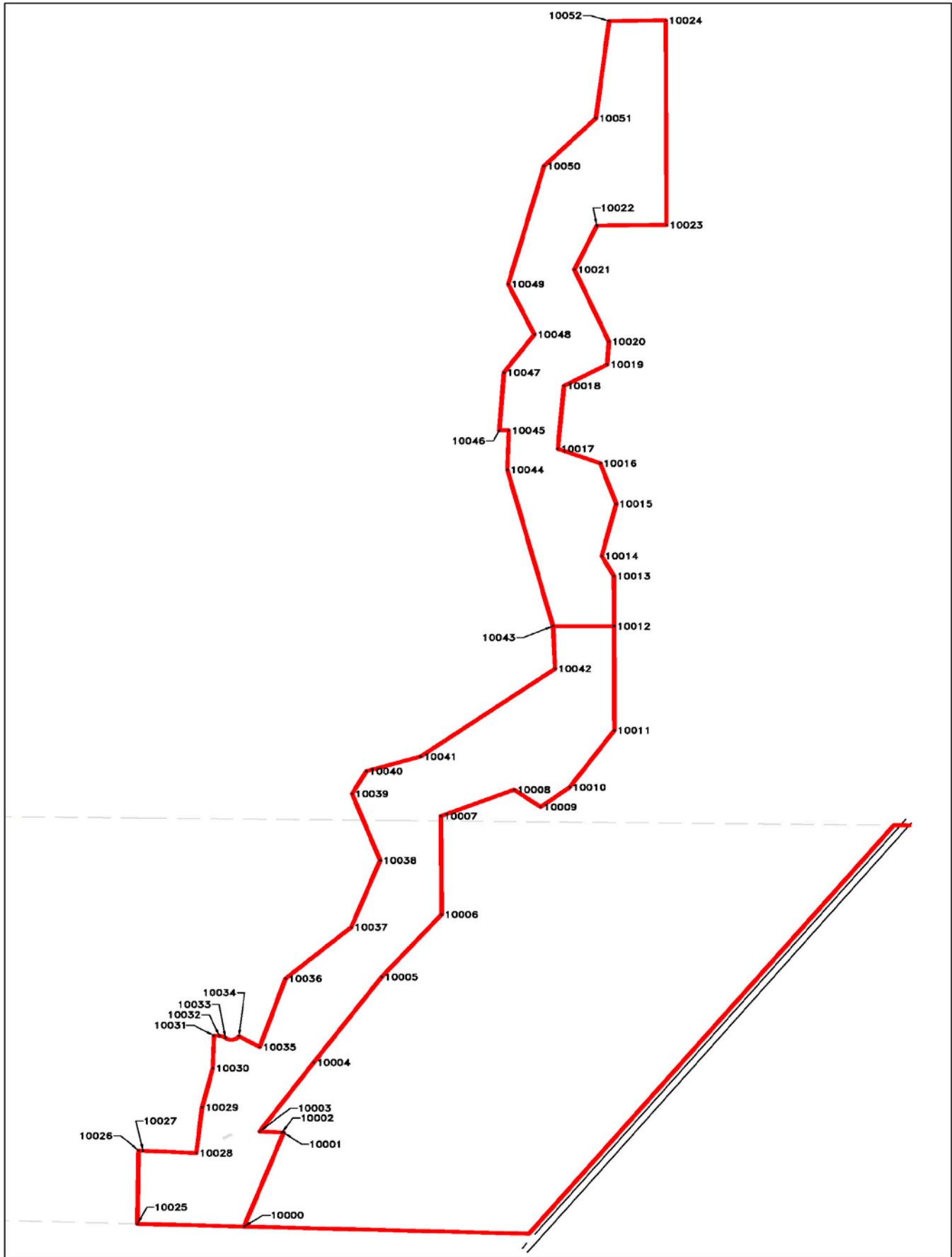
RECORD OF SURVEY  
 PROJECT NO. 2014-001  
 SHEET NO. 1 OF 1



STATE OF ARIZONA  
 COUNTY OF APACHE  
 I hereby certify that the within instrument was filed and recorded.

Book No. \_\_\_\_\_ Page \_\_\_\_\_

By: \_\_\_\_\_ Recorder \_\_\_\_\_



### Conservation Easement Corner Coordinates

Point Number	Latitude			Longitude			Elevation	Description
	Deg	Min	Direction	Deg	Min	Direction		
11000	33	58.33599167	N	109	12.33278500	W	n/a	Esmt-Crn
11001	33	58.43929667	N	109	12.28825833	W	n/a	Esmt-Crn
11002	33	58.43944333	N	109	12.29032000	W	n/a	Esmt-Crn
11003	33	58.44048500	N	109	12.31519500	W	n/a	Esmt-Crn
11004	33	58.51646000	N	109	12.25452500	W	n/a	Esmt-Crn
11005	33	58.61049333	N	109	12.17827500	W	n/a	Esmt-Crn
11006	33	58.67920167	N	109	12.11091333	W	n/a	Esmt-Crn
11007	33	58.78733333	N	109	12.11185500	W	n/a	Esmt-Crn
11008	33	58.81635000	N	109	12.02953500	W	n/a	Esmt-Crn
11009	33	58.79737333	N	109	11.99968000	W	n/a	Esmt-Crn
11010	33	58.81902833	N	109	11.96716167	W	n/a	Esmt-Crn
11011	33	58.88168000	N	109	11.91695667	W	n/a	Esmt-Crn
11012	33	58.99618667	N	109	11.91738500	W	n/a	Esmt-Crn
11013	33	59.05134000	N	109	11.91748500	W	n/a	Esmt-Crn
11014	33	59.07340167	N	109	11.93101667	W	n/a	Esmt-Crn
11015	33	59.13080000	N	109	11.91495667	W	n/a	Esmt-Crn
11016	33	59.17534833	N	109	11.93270333	W	n/a	Esmt-Crn
11017	33	59.19120667	N	109	11.98034833	W	n/a	Esmt-Crn
11018	33	59.26049000	N	109	11.97352833	W	n/a	Esmt-Crn
11019	33	59.28391667	N	109	11.92496667	W	n/a	Esmt-Crn
11020	33	59.30913167	N	109	11.92306000	W	n/a	Esmt-Crn
11021	33	59.38827333	N	109	11.96169500	W	n/a	Esmt-Crn
11022	33	59.43668333	N	109	11.93660667	W	n/a	Esmt-Crn
11023	33	59.43735333	N	109	11.85840667	W	n/a	Esmt-Crn
11024	33	59.66237500	N	109	11.85922667	W	n/a	Esmt-Crn
11025	33	58.33891833	N	109	12.45236333	W	n/a	Esmt-Crn
11026	33	58.41957333	N	109	12.45107500	W	n/a	Esmt-Crn
11027	33	58.41936500	N	109	12.44613667	W	n/a	Esmt-Crn
11028	33	58.41685167	N	109	12.38637500	W	n/a	Esmt-Crn
11029	33	58.46705333	N	109	12.37976000	W	n/a	Esmt-Crn
11030	33	58.51015167	N	109	12.36789167	W	n/a	Esmt-Crn
11031	33	58.54587000	N	109	12.36657167	W	n/a	Esmt-Crn
11032	33	58.39570833	N	109	12.36026833	W	n/a	Esmt-Crn
11033	33	58.54348167	N	109	12.35380500	W	n/a	Esmt-Crn
11034	33	58.54520833	N	109	12.33858667	W	n/a	Esmt-Crn
11035	33	58.53333500	N	109	12.31515667	W	n/a	Esmt-Crn
11036	33	58.60865333	N	109	12.28621500	W	n/a	Esmt-Crn
11037	33	58.66528333	N	109	12.21229833	W	n/a	Esmt-Crn
11038	33	58.73872833	N	109	12.17998000	W	n/a	Esmt-Crn
11039	33	58.81184833	N	109	12.21135833	W	n/a	Esmt-Crn
11040	33	58.83678167	N	109	12.19552500	W	n/a	Esmt-Crn
11041	33	58.85281500	N	109	12.13454000	W	n/a	Esmt-Crn
11042	33	58.94937000	N	109	11.98348333	W	n/a	Esmt-Crn
11043	33	58.99630167	N	109	11.98592167	W	n/a	Esmt-Crn
11044	33	59.16832167	N	109	12.03708167	W	n/a	Esmt-Crn
11045	33	59.21148000	N	109	12.03553333	W	n/a	Esmt-Crn

11046	33	59.21143000	N	109	12.04612667	W	n/a	Esmt-Crn
11047	33	59.27507500	N	109	12.04102500	W	n/a	Esmt-Crn
11048	33	59.31695167	N	109	12.00681167	W	n/a	Esmt-Crn
11049	33	59.37236833	N	109	12.03609333	W	n/a	Esmt-Crn
11050	33	59.50213667	N	109	11.99594000	W	n/a	Esmt-Crn
11051	33	59.55466667	N	109	11.93778833	W	n/a	Esmt-Crn
11052	33	59.66158833	N	109	11.92268333	W	n/a	Esmt-Crn